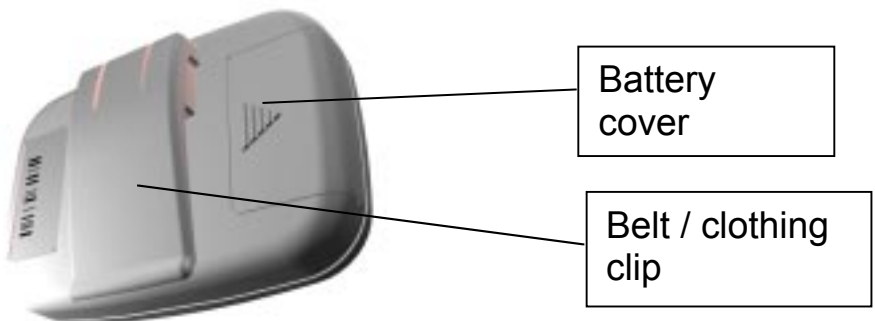
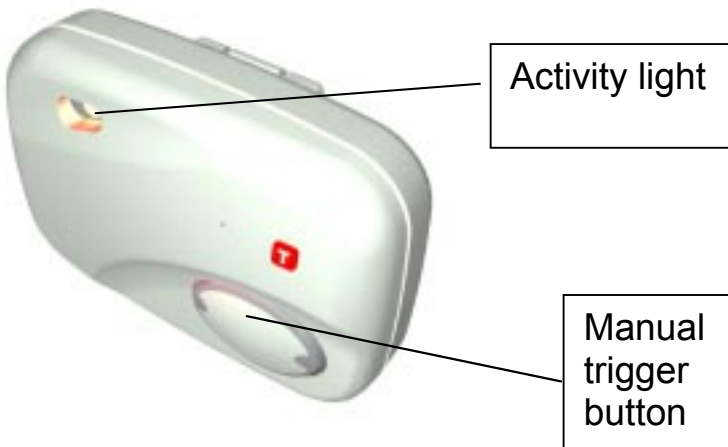


# *Fall Detector*

## User Instructions



Your **fall detector** is a battery operated device containing a microprocessor detector and a radio transmitter. It will automatically trigger an alarm call on your community alarm system if it detects that you have fallen. You can also use it to manually trigger an alarm call.

### **Wearing the fall detector**

- Clip the **fall detector** to your belt or clothing in the upright position shown in the drawing. It needs to be in the upright position to reduce the possibility of false activation.
- You can wear the fall detector to the front or the side, and you may want to experiment with positions that avoid the possibility of accidentally activating it.



Upright position



Incorrect position

## Automatic fall detection

- Green light and two "beeps" indicates that the **fall detector** has been activated.
- The **fall detector** will then monitor for 15 seconds to verify if there could have been a fall. The green light will flash while it does this.
- Red light and four "beeps" indicates that the **fall detector** is about to trigger an alarm call. (because it has detected an impact and has been not been upright for 15 seconds).

## Manual operation

- Press the button on the fall detector to trigger a manual alarm call.
- The **fall detector** will "beep" and a red light indicates the **fall detector** is triggering an alarm call.
- If the red light flashes on and off, the **fall detector** will still trigger an alarm call, but is also indicating that the battery needs to be replaced.

- 
- You can un-clip the **fall detector** at any time. It will detect shocks, so it should be handled carefully to avoid false triggering.
  - When un-clipping the **fall detector**, place it on an even surface in the upright position and preferably in the stand provided.
  - Remember, the **fall detector** will only detect you falling if you are wearing it.



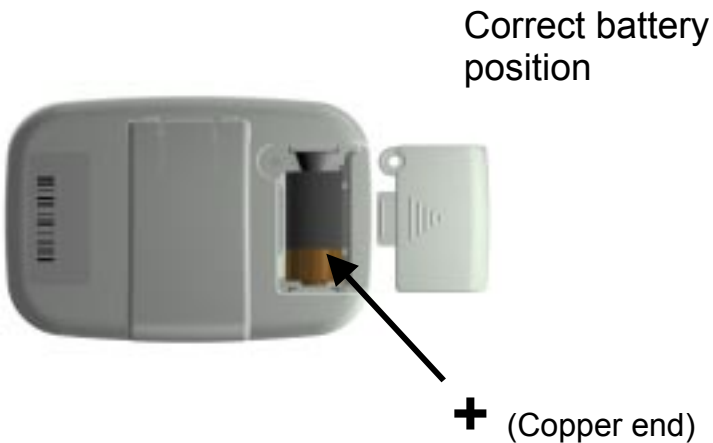
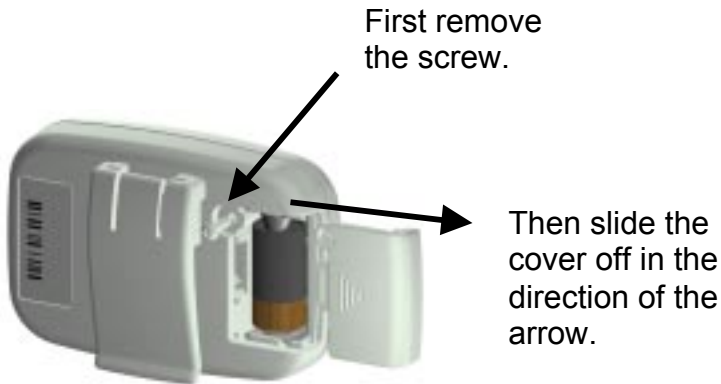
- If the **fall detector** does wake up and beep when you know you have not fallen. You can prevent it from triggering an alarm by ensuring that it is returned to an upright position.
- It is not recommended that you wear the **fall detector** whilst in bed, as normal movement in bed will cause the fall detector to trigger.

## Battery Replacement

From time to time the battery may need replacing, you will know this because somebody from your monitoring service will inform you, or you will see the red activity light flashing when you press the manual trigger button.

- Typically the battery will last for a year. Contact your monitoring service for a replacement. In many cases your monitoring service will change the battery for you.
- If it is necessary for you to change the battery, The fall detector uses a 6 volt Duracell PX28L battery.
- To access the battery, remove the battery cover screw and then the battery cover by sliding it in the direction of the arrow.
- Remove battery and replace it with the new battery. (Remember to replace the battery with it's "+" end in the correct position).

- Replace the sliding cover and the screw, then test the **fall detector** by pressing the manual trigger button. Inform the operator that you are making a battery test call.



Li

Do not dispose of the old battery in the bin, please return it to your supplier.

---

## Care of the *fall detector*

- Avoid getting the *fall detector* wet or damp (if it does get immersed in water then dry it quickly and make a manual test call to confirm it is working correctly).
- You might also want to drop the *fall detector* from a few inches above a hard surface such as a table to test its operation. After a few seconds it should “beep” twice and the green light should flash to confirm that it has detected the impact correctly.
- Clean the *fall detector* periodically with a damp cloth and mild detergent.

The Fall detector is approved by the Radiocommunications Agency to EN 300-220 and operates in the licence exempt 173MHz band.



### Manufactured By

Tunstall Telecom Ltd.  
Whitley Lodge  
Whitley Bridge  
Yorkshire  
DN14 OHR

Tel : 01977 661234  
Fax: 01977 662963  
[www.tunstallgroup.com](http://www.tunstallgroup.com)

### Supplied By